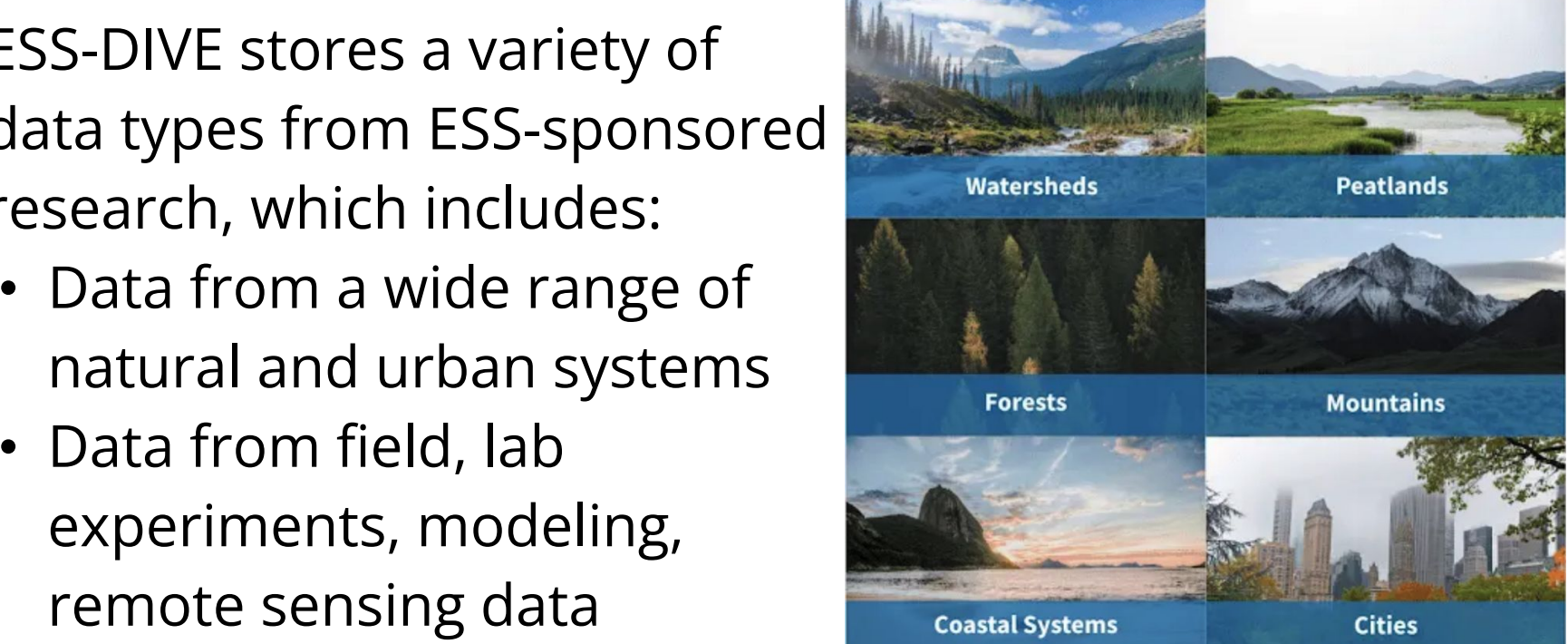




# 2025 Environmental Systems Sciences PI meeting

<sup>1</sup>Scientific Data Division, Lawrence Berkeley National Laboratory; <sup>2</sup>Earth & Environmental Sciences Area, Lawrence Berkeley National Laboratory; <sup>3</sup>National Center for Ecological Research and Synthesis

ESS-DIVE is a **CoreTrustSeal** certified data repository that enables data management, discovery, and use of a variety of DOE's Environmental Systems Science (ESS) data.



 <b>USERS</b>	<b>419</b> Registered users	<b>100</b> Contributing projects	<b>278</b> Events
 <b>DATA</b>	<b>1215</b> Public datasets	<b>283</b> Private datasets	<b>13.6 TB</b> Total file size
 <b>USAGE</b>	<b>594K</b> File downloads	<b>1M</b> Data views	<b>16</b> Public portals

**Web portal** - Web form to upload of files & metadata.

- After running your metadata against our standard set of metadata, data, and congruency checks, discoverability and reusability of your research data by addressing the issues below.

**Findable:** 100% complete

**Accessible:** 100% complete

**Reusable:** 100% ❌

**Interpretable:** ❌



**Passed 19 checks out of 19 (informational checks not included).**

**Warning for 4 checks. Please review these warnings:**

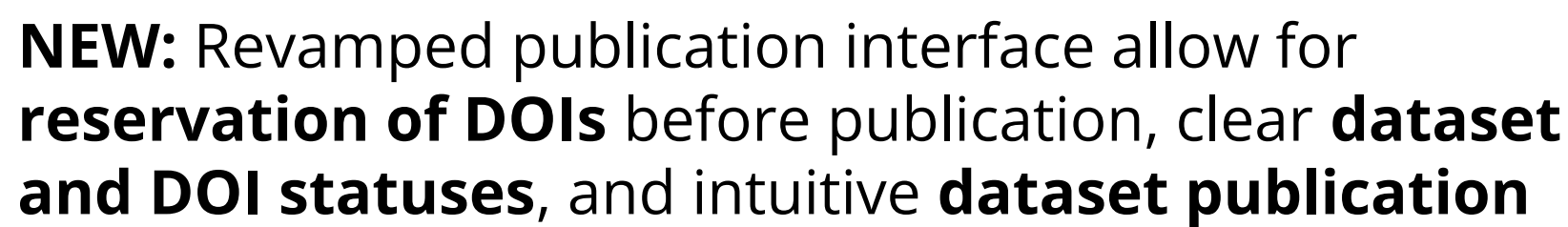
  - It is recommended that you pre-approve the license by used where possible. These 3 categories (data format, link id format) were found: application/vnd.openxmlformats-officedocument.spreadsheetml.sheet, application/vnd.openxmlformats-officedocument.presentationml.presentation, application/vnd.openxmlformats-officedocument.wordprocessingml.document. If you have a question, please contact us via email: [helpdesk@datacite.org](mailto:helpdesk@datacite.org)
  - The research "customer" role should be filled in the title.
  - A brief description of the geographic coverage of the dataset is not present.
  - Coordinates describing the point location or geographic area of this dataset are not present.

**Failed 0 checks.**

**3 informational checks.**

ESS-DIVE supports **end-to-end data management lifecycle**, and offers project-specific features that allow researchers to **collaborate, share, and manage** data within their teams.



- Dataset sharing within project teams to promote collaborative editing and curation of data packages
- Project level team management and access control
- Data search within a project
- Custom project-centric data portals - curated collections of project data or other views (e.g. field site, campaign)
- Project data citations and metrics



- Use the external linking feature to connect data
- Provide input on linking related resources for scientific use, and complex data citations

Adopt **data and metadata reporting formats** in your project's data collection and publication workflows

```

graph LR
    A[A) Use high-level reporting formats that apply to a wide-range of data types] --> B[Model Data]
    A --> C[Water-Soil-Sediment Chemistry]
    A --> D[Land-Use/Land-Change Database Data]
    A --> E[CSV File Structure]
    A --> F[Sample Identifiers]
    B --> G[B) Next, choose data type specific data reporting formats]
    C --> G
    D --> G
    E --> G
    F --> G
  
```

A) Use high-level reporting formats that apply to a wide-range of data types

- CSV File Structure
- Sample Identifiers

B) Next, choose data type specific data reporting formats

- Model Data
- Water-Soil-Sediment Chemistry
- Land-Use/Land-Change Database Data

- 12 data and metadata reporting formats for environmental data
  - See poster: “ESS-DIVE Partner Projects” for more details
- 
- ```

graph LR
    A[Locations Metadata] --> B[Amplicon Data]
    A --> C[Hydrologic Monitoring Data]
    A --> D[Soil Respiration Data]
    A --> E[Unoccupied Aerial System (UAS)]
    B --> F[C) Provide File-Level metadata: Describe each file uploaded]
    C --> F
    D --> F
    E --> F
    F --> G[D) Submit dataset to ESS-DIVE: Using Package-Level Metadata]
  
```
- The diagram illustrates the data flow from 'Locations Metadata' to various datasets (Amplicon Data, Hydrologic Monitoring Data, Soil Respiration Data, and Unoccupied Aerial System (UAS)) and then to the submission options for ESS-DIVE. The submission options are categorized into two main paths: C) Provide File-Level metadata: Describe each file uploaded, and D) Submit dataset to ESS-DIVE: Using Package-Level Metadata.

Crystal-Ornelas, R., Varadarajan, C.\*, O’Ryan, D. et al. Enabling FAIR data in Earth and environmental science with community-centric (meta)data reporting formats. *Sci Data* 9, 700 (2022). <https://doi.org/10.1038/s41597-022-01606-w>

ESS-DIVE provides many features to **access and use data**.

- Find datasets by project, DOI, author or other search terms

- ### Citing ESS-DIVE Datasets
- Include ESS-DIVE datasets in the *data availability statement* and as a *reference* in your papers



**BER Bio-Eco Data Integration**  
project (BERTron) to harmonize  
and integrate data across ESS-DIVE,  
NMDC, KBase, EMSL, and JGI

- Enabling Unified Search
- Standardizing on schema terms
- Code-a-thons
- User Interviews

20+ use cases completed to connect interdisciplinary ESS-DIVE datasets to related research outputs, such as sites and samples, associated journal articles, references, derived and source data.

- **Project, Sites, Samples**
- **Associated Journal Article** - Paper dataset created for (supplement)
- **References** - related datasets, workflows, journal articles, code
- **Data derived from this dataset** - child datasets
- **Source data** - original source data used in dataset (e.g. EMLS), datasets included in a collection

*Help track provenance and citations*

Interested in adding related works to your ESS-DIVE dataset?  
Contact us at [ess-dive-support@lbl.gov](mailto:ess-dive-support@lbl.gov)

**Connect with us in various ways:**

- Helpdesk, tutorials, webinars, annual workshop
- User interviews to solicit feedback on ESS-DIVE features
- PI meeting tutorials, participation in ESS Cyberinfrastructure Working Groups
- ESS-DIVE Archive Partnership Board consisting of leads of major ESS projects provides input into ESS-DIVE features and activities
- Attend the “ESS-DIVE Tutorial for Using Data” and “ESS-DIVE Tutorial for PIs and Data Managers”

Questions? [ess-dive-support@lbl.gov](mailto:ess-dive-support@lbl.gov)  
 ESS-DIVE Documentation: <https://docs.ess-dive.lbl.gov/>  
 Webinars: <https://ess-dive.lbl.gov/webinars/>  
 Tutorials: <https://ess-dive.lbl.gov/video-tutorials/>

This research is supported as part of the ESS-DIVE repository and funded by the U.S. Department of Energy, Office of Science, Office of Biological and Environmental Research under Award no. DE-AC02-05CH11231. This research used resources of the National Energy Research Scientific Computing Center (NERSC), a U.S. Department of Energy Office of Science User Facility operated under Contract No. DE-AC02-05CH11231.