



ESS-DIVE Training Sessions

Overview and Agenda



All ESS researchers looking to use ESS-DIVE
will benefit from this training

- Brief overview of ESS-DIVE with Q&A (30 min)
- 3 parallel training sessions (1 hr 30 min)
 - New user bootcamp
 - Project data management
 - ESS-DIVE data and metadata formats
- Google Drive:
<https://drive.google.com/drive/folders/1fTC83n9ohx8eaMvdaTetadOKCOrNqol9>

Goals for ESS-DIVE Training Sessions

**Start publishing
your data on
ESS-DIVE**
Good data
management
practices



FAIR Data

Use ESS-DIVE
community formats to
make your data
more visible and
reusable

**Utilize Project Data Management
Capabilities**

Project data management tools and support

Presenters



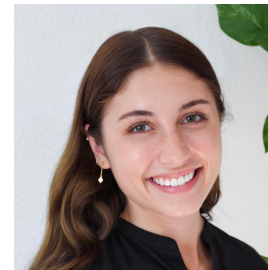
Charuleka Varadharajan

*ESS-DIVE Community Engagement
and Partnerships Lead*



Madison Burrus

Computer Systems Engineer



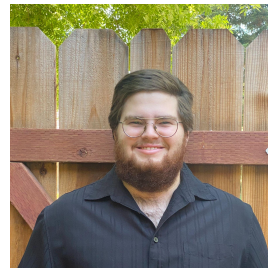
Emily Robles

Data Management Research Associate



Robert Crystal-Ornelas

Postdoc Researcher



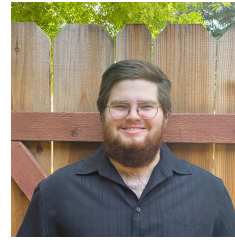
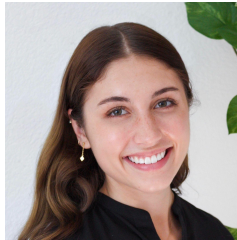
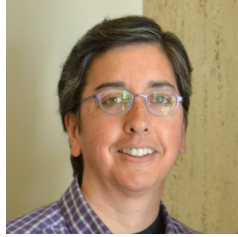
Dylan O’Ryan

Student Research Assistant

ESS-DIVE Team



ESS-DIVE Leadership



Contact us at any time at ess-dive-support@lbl.gov

What is your primary role in your research group?

Data Collector

Modeler

Other Data User

PI

Data Manager



When poll is active, respond at **pollev.com/essdive**

Text **ESSDIVE** to **22333** once to join

Familiarity with ESS-DIVE

published datasets
previously

future data contributor

downloaded data

attended previous
ESS-DIVE presentation



Reasons to publish data

Journal and BER ESS requirements

Most journals are starting to **require** data associated with paper findings, figures, and tables to be **publicly available on a long-term data repository**

Include **DOIs**, such as those issued by ESS-DIVE, in the **Data Availability** section of a paper



DOI: Digital Object Identifier



Share your work with the community

Gain **publicity** from data publications, similarly to journal publications

Allow others to use your work for **future studies**

Promote FAIR data practices

Findable, Accessible, Interoperable, and Reusable

Data reporting formats and metadata requirements abide by these standards

Where to publish data



Repository: a
place to store data



Environmental Systems Science Data (ESS-DIVE)

ESS funded projects are
required to store data on
ESS-DIVE

Accepts observational,
experimental, sampling,
and modeling data



Environmental Data Initiative (EDI)



NSF Arctic Data Center (ADC)



National Center for Biotechnology Information (NCBI)



United States Geological Survey (USGS) ScienceBase



Earth System Grid Federation (ESGF)



National Microbiome Data Collaborative (NMDC)

1. About ESS-DIVE

Charuleka Varadharajan

What is ESS-DIVE?



Data Repository to

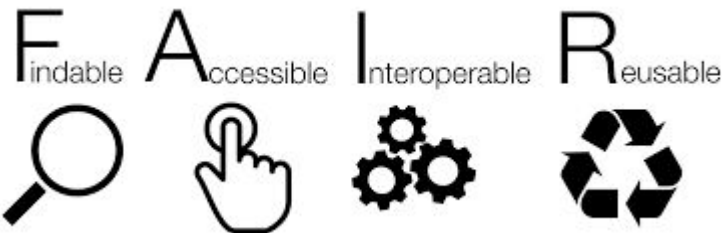
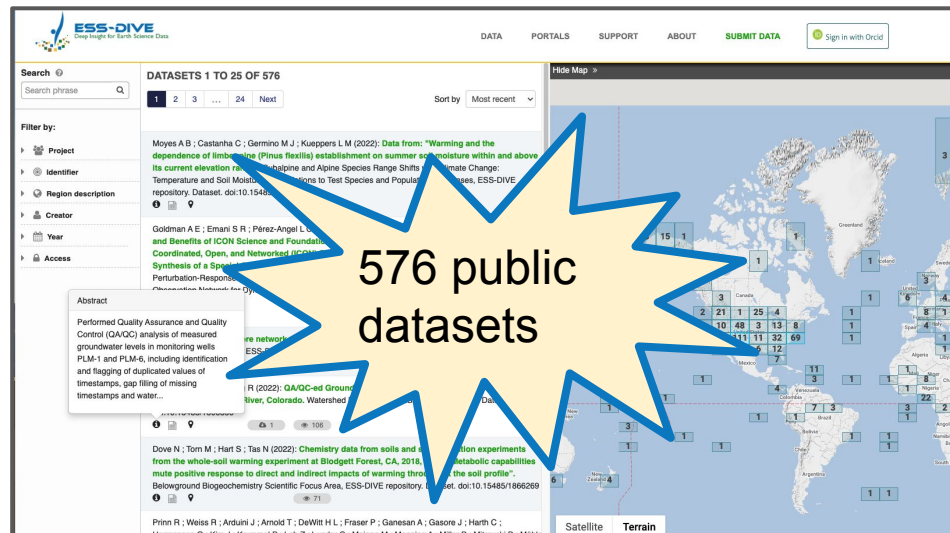
preserve

expand **access** to

and improve **usability** of

ESS data

data.ess-dive.lbl.gov



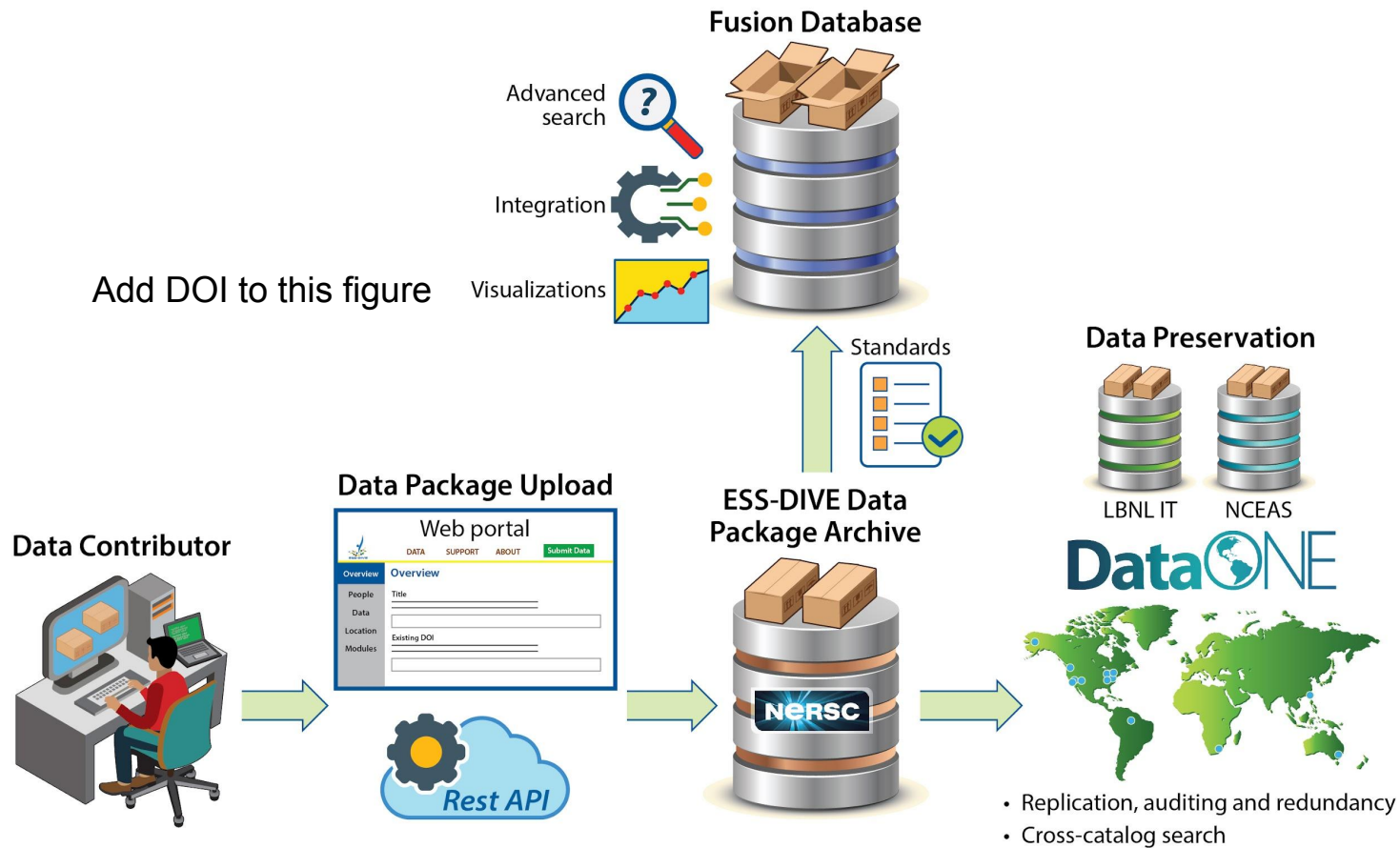
Use of ESS-DIVE is **mandatory** for ESS project data management plans

Scope of ESS-DIVE Data

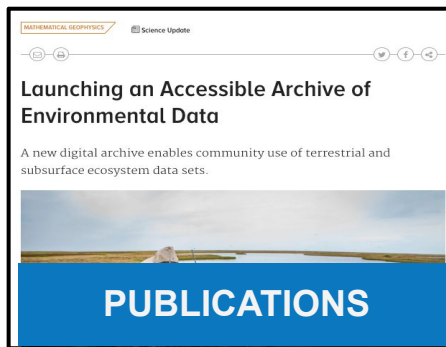
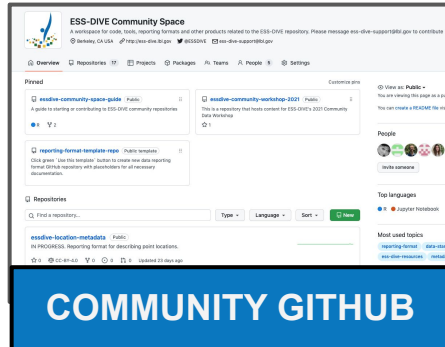
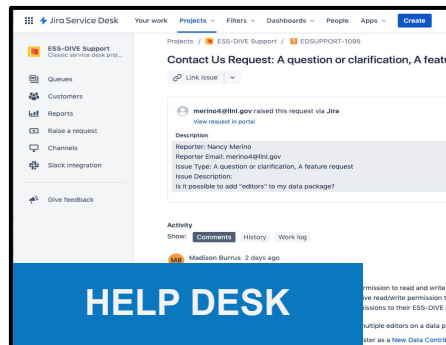
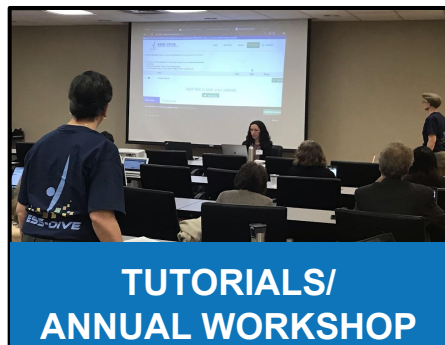
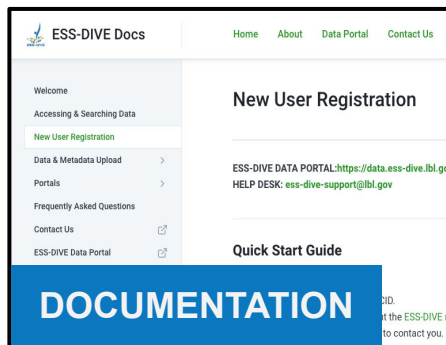
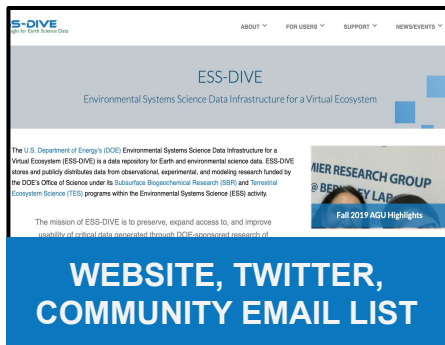
- Data from projects funded by or related to DOE Environmental System Science Program
- Observational, experimental, and modeling activities in the Earth sciences.



Easy Upload Capabilities & Broad Data Availability



Supporting and Engaging the ESS Community



Which of these terms are you familiar with?

Metadata

Data package

Repository

DOI

Persistent identifier

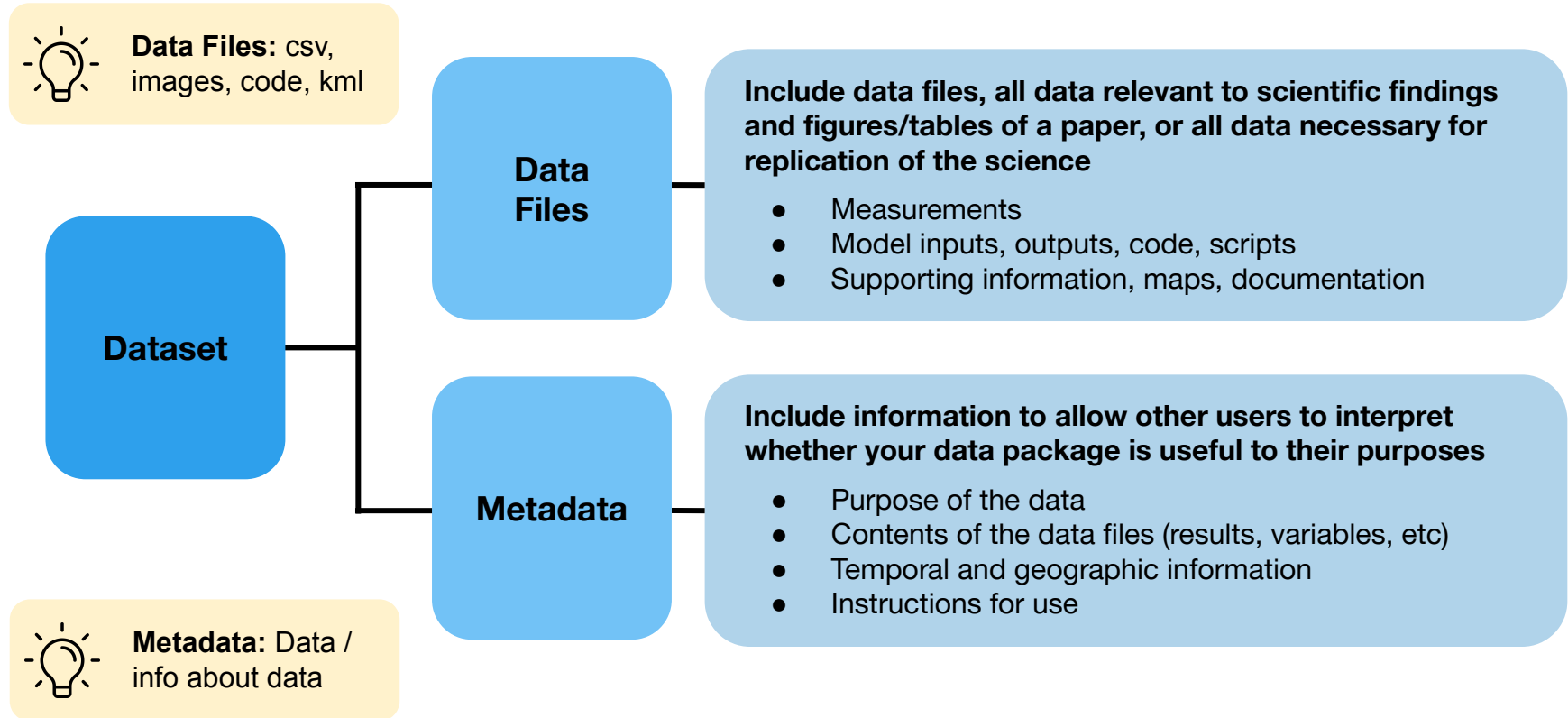
ORCiD

All of the above

What are these?



Components of a dataset (data package)



Terms to keep in mind



Data Storage

Repository

- A central location for long term data storage

Published Data

- Data that has been made publicly accessible



Publishing Terms

Metadata

- Descriptive information about data files

Dataset/Data Package

- Combination of data files and metadata



Persistent Identifiers

ORCiD

- For people; permanent link for your professional activities

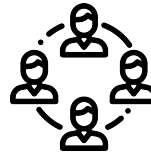
DOI

- Persistent identifier that links to data on the internet

ESS-DIVE provides ...



Metadata standards
for data packages



Community reporting
formats for several
ESS data types



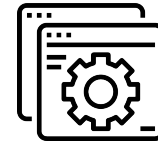
Guidance related to
data packaging and
authorship



Curation of metadata and
ensures file readability



Digital Object Identifier and
citation text for published data



Long-term data
search and
download availability

ESS-DIVE is the DOE BER ESS location for long-term data preservation

2. Today's Training Sessions

Tutorial Leads



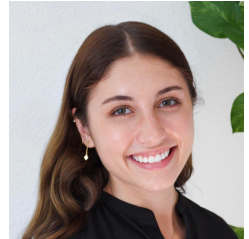
All ESS researchers looking to use ESS-DIVE
will benefit from these trainings

- **New ESS-DIVE Users:** Publish and search on ESS-DIVE
- **PIs and Data Managers:** Manage project data on ESS-DIVE
- **Any researcher:** Learn to use new ESS-DIVE community data formats

New User Bootcamp

New users can learn how to search for ESS-DIVE data and create and publish their own datasets.

- Learn core components of datasets and ESS-DIVE publication requirements
- Create and submit a practice dataset on the ESS-DIVE Sandbox
- Understand how to search for and download data



Emily Robles
*Data Management
Research Associate*

Project Data Management Tutorials



PIs and Data Managers can learn about ESS-DIVE support for project data management

- Understand what capabilities ESS-DIVE offers that you can use in a data management plan
- Learn about current and upcoming ESS-DIVE features that you can use to organize your project data and teams
- Become aware of ESS-DIVE outreach efforts to projects



Charuleka Varadharajan
Community Engagement Lead



Madison Burrus
Computer Systems Engineer

ESS-DIVE Data and Metadata Formats

Data managers and data collectors will learn how to make data more accessible and reusable

- Learn about ESS-DIVE data reporting formats
- Hands-on workshop with metadata and CSV file reporting formats
- Hear how 2 DOE projects are applying reporting formats to their data



Rob Crystal-Ornelas
Postdoc



Dylan O'Ryan
Student Research Assistant



Amy Goldman
Earth Scientist

Connect With Our Team!

To get help:

ess-dive.lbl.gov



ess-dive-support@lbl.gov

docs.ess-dive.lbl.gov

To stay updated:

ess-dive-community@lbl.gov



[@essdive](https://twitter.com/essdive)



Acknowledgements

Advisory Groups: ESS-DIVE Archive Partnership Board, ESS Cyberinfrastructure Working Groups

Funding: EESSD Data Management



Questions?